

BOCA FALLS - PLAT ONE

A PARCEL OF LAND LYING IN SECTION 22, TOWNSHIP 47 SOUTH, RANGE 41 EAST.
PALM BEACH COUNTY, FLORIDA.

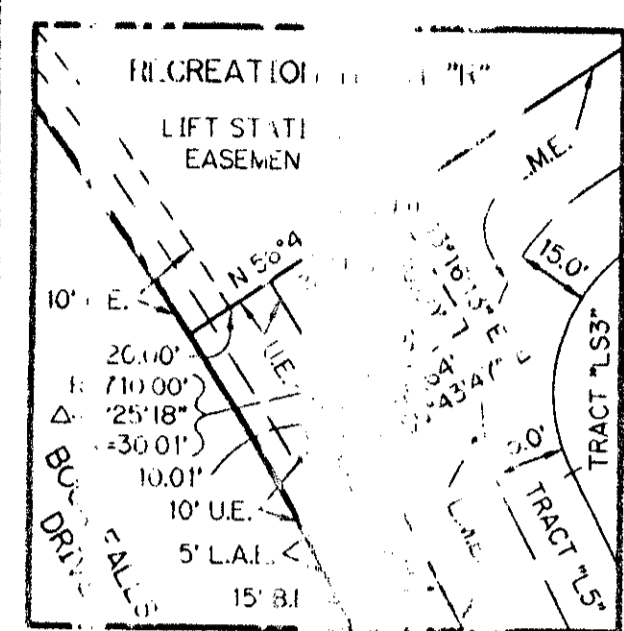
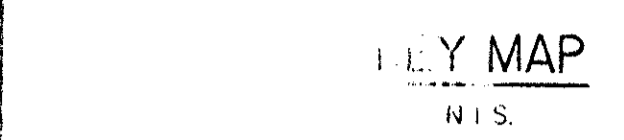
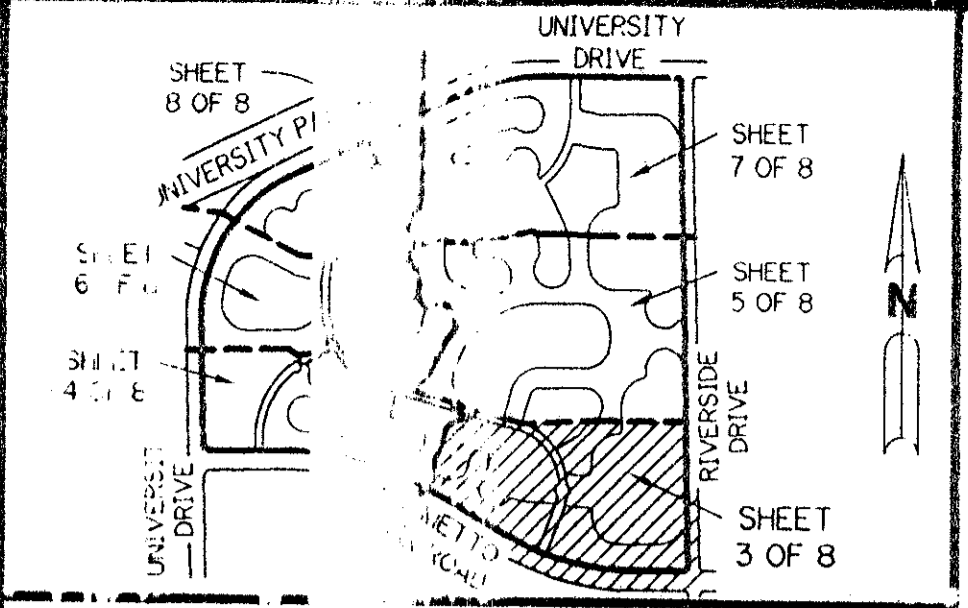
SHEET 3 OF 8 MAY, 1994

0201-015

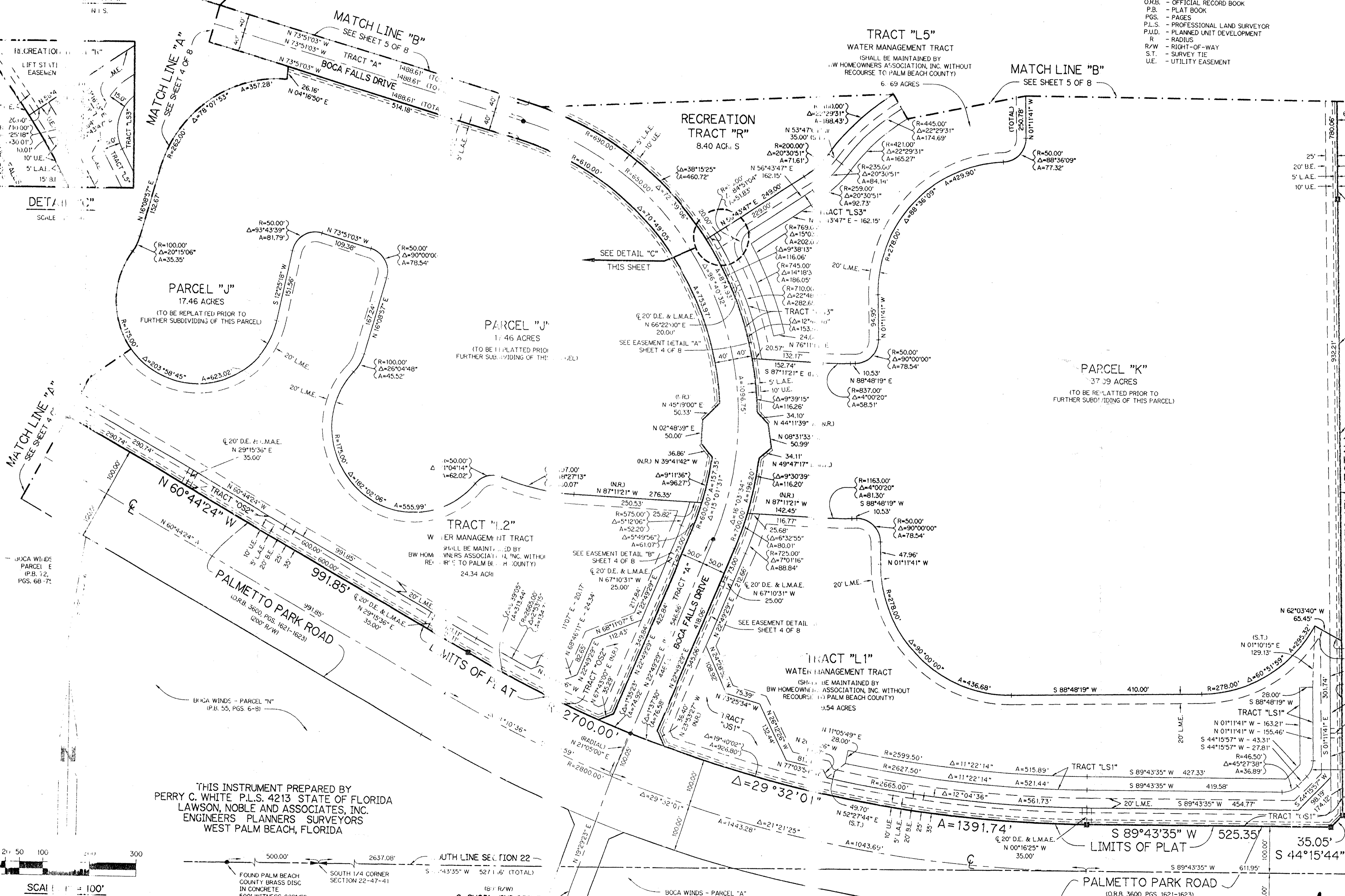
126

LEGEND:

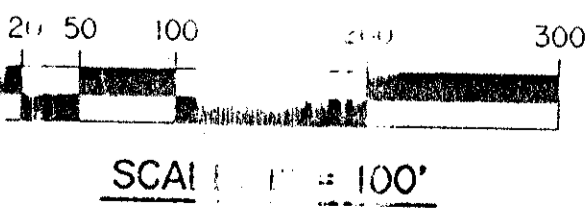
- - PERMANENT REFERENCE MONUMENT, PLS #4213
- - PERMANENT CONTROL POINT, PLS #4213
- Δ - DELTA ANGLE
- A - ARC LENGTH
- B.E. - BUFFER EASEMENT
- D.E. - DRAINAGE EASEMENT
- L.A.E. - LIMITED ACCESS EASEMENT
- L.M.A.E. - LAKE MAINTENANCE ACCESS EASEMENT
- L.M.E. - LAKE MAINTENANCE EASEMENT
- L.W.D.D. - LAKE WORTH DRAINAGE DISTRICT
- N.R. - NOT TO SCALE
- N.T.S. - NOT TO SCALE
- O.R.B. - OFFICIAL RECORD BOOK
- P.B. - PLAT BOOK
- PGS. - PAGES
- P.L.S. - PROFESSIONAL LAND SURVEYOR
- P.U.D. - PLANNED UNIT DEVELOPMENT
- R - RADIUS
- R/W - RIGHT-OF-WAY
- S.T. - SURVEY TIE
- U.E. - UTILITY EASEMENT



SCALE 1" = 100'



THIS INSTRUMENT PREPARED BY
 PERRY C. WHITE P.L.S. 4213 STATE OF FLORIDA
 LAWSON, NOBLE AND ASSOCIATES, INC.
 ENGINEERS PLANNERS SURVEYORS
 WEST PALM BEACH, FLORIDA



SOUTH LINE SECTION 22
 S 43°35' W 5271.6' (TOTAL)
 FOUND PALM BEACH COUNTY BRASS DISC IN CONCRETE
 500' WITNESS CORNER TO SOUTH 1/4 CORNER SECTION 22-47-41
 SHORE WIND DRIVE
 PLAT NO. 1 BAY WINDS
 (P.B. 50 PGS. 36-38)

SUBDIVISION # BOCA FALLS - PLAT ONE
 BOOK TO PAGE 126
 FLOOD MAP # 100B
 ZONING RT
 QUAD # 69
 ZIP CODE 33433
 SE 80-47
 PUD NAME BAY WINDS PLAT ONE

742-778

0201-015

BOCA FALLS - PLAT ONE 73/126 SHEET 3 OF 8

SOUTHEAST CORNER SECTION 22-47-41
 FOUND PALM BEACH COUNTY BRASS DISC IN CONCRETE